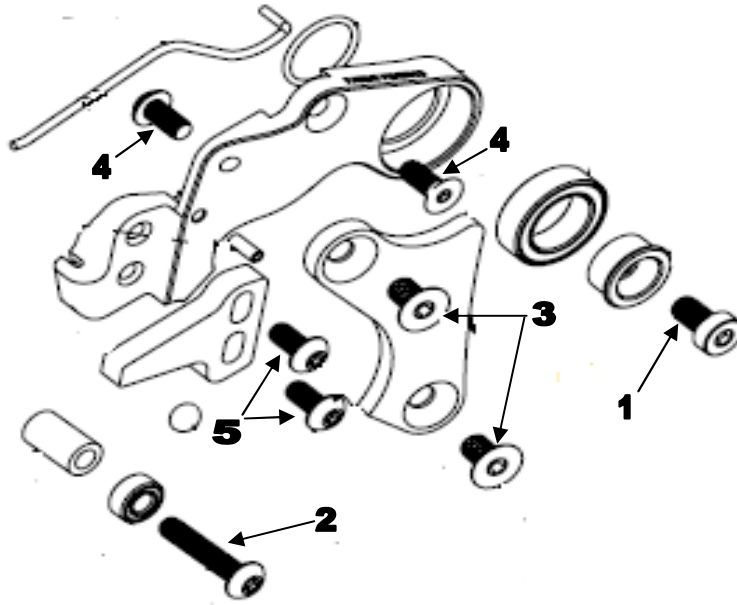


- A) All Rockers bolts are Torqued to (10lb.ft, 120 lb.in, 13 Nm.)**
and installed with Blue Loctite 242
- A1) Only the upper rocker bolts need washers.**
- B) Both link pins are Anti-Seized and Torqued to (27 lb.ft, 306lb.in, 35Nm.)**
- C) Both shock bolts are installed with Anti-Seize and Torqued to**
(10lb.ft, 120lb.in, 13Nm.)
- C1) Only the upper shock bolt needs a washer.**



- 1) Front derailleur link mounting bolt is installed with blue Loctite 242 and torqued to (**5lb.ft, 60 lb.in, 7 Nm.**)
- 2) Install 3 mm front derailleur peg with blue Loctite 242 and torque to (**35in-lb, 4 Nm.**)
- 3) Install black ISCG chain guide "Beak" using blue Loctite 242 and torque to (**44.3 in-lb, 5 Nm.**)
- 4) Install 3mm front derailleur bolts using blue Loctite 242 and torque to (**35in-lb, 4Nm**)
- 5) Install 3mm peg tab bolts using blue Loctite 242 and torque to (**26 in-lbs, 3 Nm**)